

Rental Catalogue

FON Energy
Services

an Akastor and IKM company



contact@fonenergyservices.com

Index

1	MOB Boats
2	Water Bags
3	Weight Blocks
4	Load Cells
5	Hoists and Clamps
6	Various Rental Equipment
7	Personnel
8	De-Trenching Equipment
9	PLGR
10	ROV
11	Torque Equipment

What is Føn Energy Services?

Føn is an independent service provider centered in the middle of the energy transition, enabled by industrial backing and digital solutions



Offshore Wind

Engineering, Operations & Maintenance services across all asset classes in offshore wind



Oil & Gas

Engineering, Operations & Maintenance services for auxiliary equipment in the O&G and maritime sector



contact@fonenergyservices.com

MOB Boats | For rental and sale

For quick deployment to cover various needs, both on and offshore

Mako 655 Jet Boat



Name:	Sabrina
Dimensions (LxWxH):	675 x 270 x 220 cm
Weight (Fully loaded):	3.100 kg
Off-load Hook:	NHMKG 5

MARE GTC 700



Name:	Pamela
Dimensions (LxWxH):	625 x 288 cm, LOA: 712 cm
Weight (Fully loaded):	2.880 kg
Off-load Hook:	HMK 8



MOB Boats | For rental and sale

For quick deployment to cover various needs, both on and offshore

MARE GTC 700



Name:	Jenifer
Dimensions (LxWxH):	626 x 224 cm, LOA: 718 cm
Weight (Fully loaded):	2.795 kg
Off-load Hook:	NORHMK 5 /HMKWS 5

MARE GTC 700-2VD



Name:	Dolly
Dimensions (LxWxH):	625 x 225 cm, LOA: 747 cm
Weight (Fully loaded):	3.580 kg
Off-load Hook:	NORHMK 5



Water Bags | Long and short term rental

We provide flexible delivery terms, ensuring water bags meet all safety requirements and maintain a safety factor of 7:1. Spreader bars are also available

Water Bags 1 to 5 Tonnes



Water Bags 10-50 Tonnes



For companies with similar needs across business units, long-term agreements provide predictability and cost efficiency



contact@fonenergyservices.com

Water Bags for Lifeboats | Long and short term rental

For load testing lifeboats, used both onshore and offshore

Water bags for Lifeboats 40 - 375kg



We have water bags for testing lifeboats in most sizes in stock.
Note: not for lifting.



Weight Blocks | Long and short term rental

Weight blocks/steel weights up to 440 Tonnes, available in various sizes and configurations to meet diverse needs

< 1 Tonne



Max weight pr column: 350-700kg

Min weight: 50kg

Portable: 21kg per plate

0,6-12,5 Tonnes

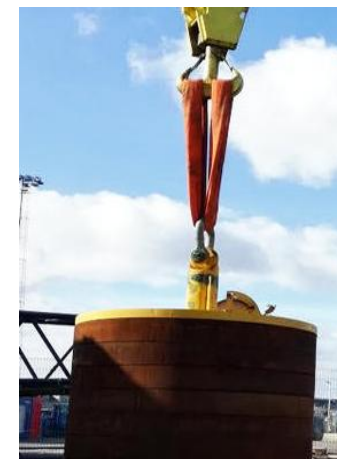


Max weight pr column: 12,5 Tonnes

Min weight: 0,5 Tonnes

Dimensions (H,D) 2.100mm, 1.200x800mm

> 60 Tonnes



Max weight pr column: 60-100 Tonnes (KV-60, KV100)

Min weight: 4,3-4,6 Tonnes

Dimensions (H,D) 3.200mm, 2.490mm



contact@fonenergyservices.com

Weight Blocks | Long and short term rental

Weight blocks/steel weights up to 440 Tonnes, available in various sizes and configurations to meet diverse needs

Double Stem



Max weight pr column: 10 Tonnes

Min weight: 0,9 Tonnes

Dimensions (L, H): 1.500mm, 1.300mm

10 Tonnes (KV-10)



Max weight pr column: 16,6T MGW

Min weight: N/A

Dimensions (L, H): 1.920 x 800mm,
1.690mm



Load Cells

We have load cells from various manufacturers to meet all needs

< 5.000 kg



Producer: Liden Weighting, Teo
Teknikk and Scotload

Type: Spring scale, Crane scale or
Dynamometer

Transmission: Clock reading or Wireless

5.000 kg – 35.000 kg



Producer: Teo Teknikk and Scotload

Type: Crane scale or
Dynamometer

Transmission: Clock reading or Wireless

> 35.000 kg



Producer: Liden Weighting, Teo
Teknikk and Scotload

Type: Straightpoint and Scotload

Transmission: Wireless



contact@fonenergyservices.com

Hoists, Clamps, & Beam Clamps

We have a large selection of other hoists in stock. Complete list available upon request

Eagle Clamps (EC-SBBE20, EC-SBBE40, EC-SBBE75)



WLL: 2-7.5 Tonnes

Clamp Opening: 0-40mm

Weight: 3,7-14,5kg

Beam Clamps (EC-SBBE20, EC-SBBE40, EC-SBBE75)



WLL: 1–10 Tonnes

Beam Width: 70-215mm

Test Load: 14,71 kN



Hoists, Clamps, & Beam Clamps

We have a large selection of other hoists in stock. Complete list available upon request

Manual Chain Hoist (JT-008 – JT-090)



WLL: 0,8 – 20 Tonnes

Lifting Height: 1,5 meters

Dry Weight: 5,7 – 40 kg

IR Air Hoist (08F071)



WLL: 1,5 – 25 Tonnes

Lifting Height: 3 meters

Dry Weight: 38 – 324 kg



Various Rental Equipment

Complete equipment list available upon request

Tool Container



Description

Containers with tools, lifting equipment, and consumables. Inspected annually and approved for lifting, including offshore

Standard Equipment Package



Description

Lifting equipment: Chain hoists, Shackles, Round slings. Fall protection etc.
Tooling equipment: Pipe sets – Wrenches – Adjustable spanners – Crowbars etc.

Scissor Lift



Description

ZS0808DC-Li is an electric scissor lift from Zoomlion, with a capacity of 230 kg and a working height of 10 meters. Delivered with its own trailer

Torque Wrench (MN-900, MN-300)



Description

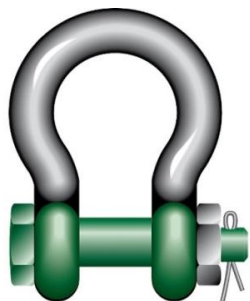
Capacity: 480-940 Nm, 60-300
Producer : Britool, Stahlwille
Length : 1397mm, 553mm



Various Rental Equipment

We conduct annual inspections on all lifting equipment, with pre-shipment inspections upon request. All equipment is DNV 2.7-1 certified and includes an approved certificate

Shackles



Description

Shackles from 1.25T to 250T (GWVU, GWVV and HLKH). We perform annual inspections or new inspections according to request

Sea Water Pump



Description

2" Elima-matic Bolted Aluminum-ATEXSea water pump that connects to compressed air.

Pneumatic Threading Machine – Rigid Model 535



Description

Large chip tray and oil reservoir make the 535 ideal for longer, uninterrupted threading. Maximum uptime with the upgrades that matter most to the pipe worker

Rigid Inspection Camera



Description

The system has recording capabilities for images, videos, and audio. Delivered in a handy case with all necessary equipment, as well as an extension cable. Rotatable image and 2x zoom.



Various Rental Equipment

We conduct annual inspections on all lifting equipment, with pre-shipment inspections upon request. All equipment is DNV 2.7-1 certified and includes an approved certificate

Induction Heater



Description

Max output: 1.5 kW, 10 A fuse. Multi-tool for loosening bolts, nuts, and similar during service and repair work. Heats bolts to red-hot in just a few seconds

Pulley Block



Description

Pulley blocks from 1 – 20 Tonnes . We perform annual inspections or new inspections according to your request

Pneumatic Core Drill



Description

Spitznas air-powered drill with air magnet (ATEX II 2Gc T6)
Drilling capacity (core bit): Ø 52 mm with 50 mm thickness.
Operation: Pneumatic 4-6 bar. Max 6 bar.

Cengar CL75 Pneumatic Air Saw – ATEX Certified



Description

Handheld or clamp-mounted for cutting heavier sections and pipes up to Ø150 mm. Uses 19 mm Bi-Metal blades.



Various Rental Equipment

We conduct annual inspections on all lifting equipment, with pre-shipment inspections upon request.
All equipment is DNV 2.7-1 certified and includes an approved certificate

Spooling Equipment



Description

Operation: Electrohydraulic
Tensioning: 2 wire drums
Maximum tension: 24,000N, adjustable constant tension.

Dimensions (LxWxH): 4000 x 2993 x 2438 mm
Tare weight: 7,320 kgMGW: 10,000 kg
Hydraulic spooling system equipped with Ex zone 1 and 2 equipment
Type NORSOK U-99, certified for use in Atex Zone 2

Spooling Equipment



Description

Operation: Pneumatic
Tensioning: Air supply by 7 bar steel drum
Maximum tension: 24,000N

Dimensions (LxWxH): 3134 x 1900 x 2000 mm
Tare weight: 1605 kgMGW: 6000 kg
Type NORSOK U-99, certified for use in Atex Zone 2

Hydraulic Pumps



Description

We carry a range of pumps from Larzep for lifting, pressing, and tensioning tools for industrial applications

Bristle Blaster Pneumatic



Description

Removes corrosion and generates an anchor profile. The bristles are designed to hit the corroded surface with kinetic energy equivalent to standard processes that use sandblasting media



Various Rental Equipment

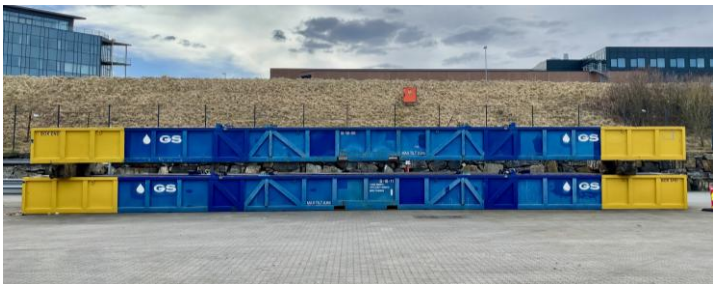
We conduct annual inspections on all lifting equipment, with pre-shipment inspections upon request.
All equipment is DNV 2.7-1 certified and includes an approved certificate

DNV-Certified 22-Meter Offshore Basket



Description: Basket used for transporting equipment, tools, and materials, including heavy or irregular loads, between vessels, platforms, and onshore sites

Length: 21 800mm (Overall)



Weight & Capacity: Tare weight (5500 kg), payload capacity (14 000 kg), maximum gross weight (19 500 kg)

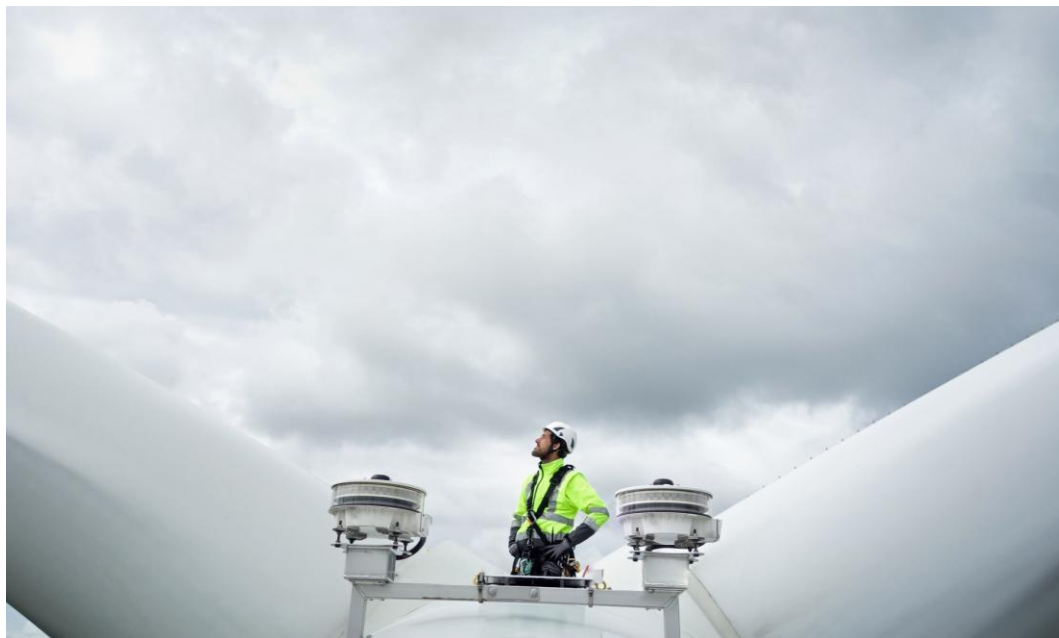
Certifications DNVGL-ST-E271, ISO 10866-1



Personnel | To accompany your rental equipment

We also offer experienced onshore and offshore personnel to ensure safe and efficient operations

Flexible, tailored services to meet varied needs



Contact us to receive additional information and a personalized offer

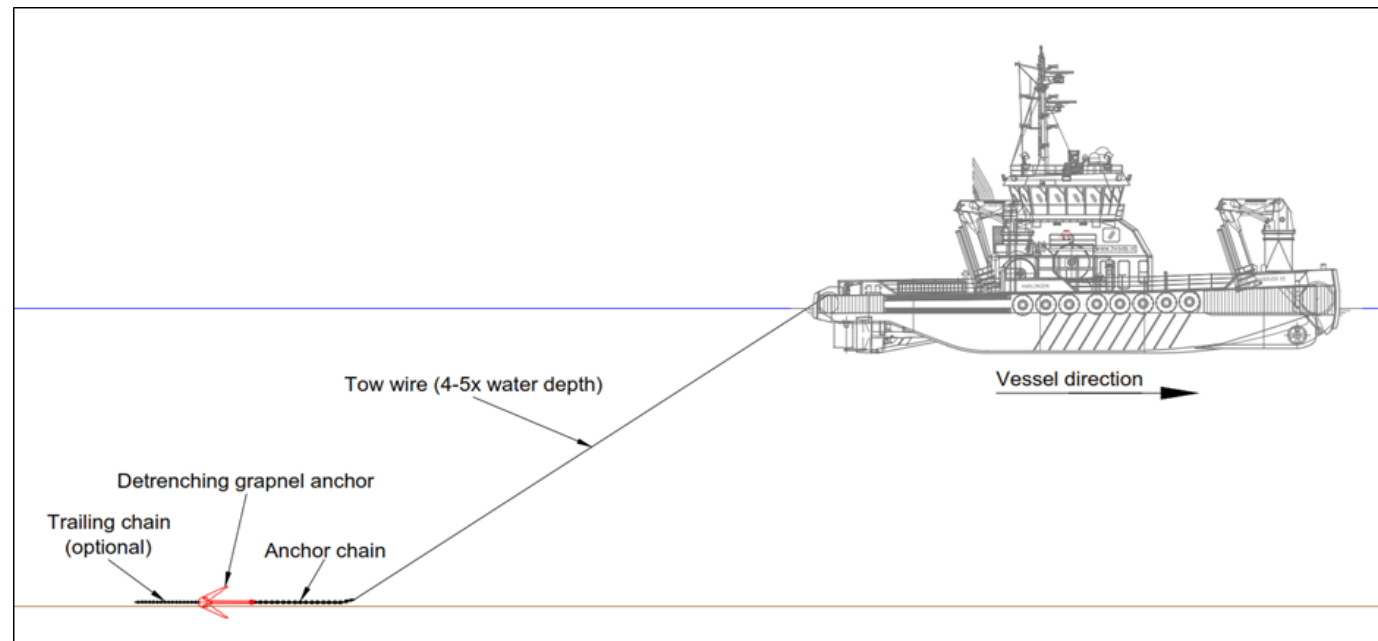


contact@fonenergyservices.com

De-Trenching Equipment

For route clearance and out of service cable removal. We follow ICPC recommendations

Complete Set



The De-Trenching equipment consists of several components, which are listed on the following page



De-Trenching Equipment

For route clearance and out of service cable removal. We follow ICPC recommendations

Components



Chains

Diameter of 32mm and a length of 15 meters (GWVP and GWVR)



Links

Master Links 17T (GWSZ, GWTA, GWTG, GWTB)



Grapnels

Sand Grapnel Assemblies (GWYT / CV-2933 and GWYU / CV-2940)

Rennie Grapnels (DM686 with Connection Link GWTT and DM687)



Connectors

10x Conn. Link 216T



Sliding Prong

Sliding Prong (57761, 57762)



Gifford Assys

Gifford Assy 1 (DM606, DM608, DM623)

Gifford Assy 2 (GWTO, GWTP, GWTQ)



Swivel

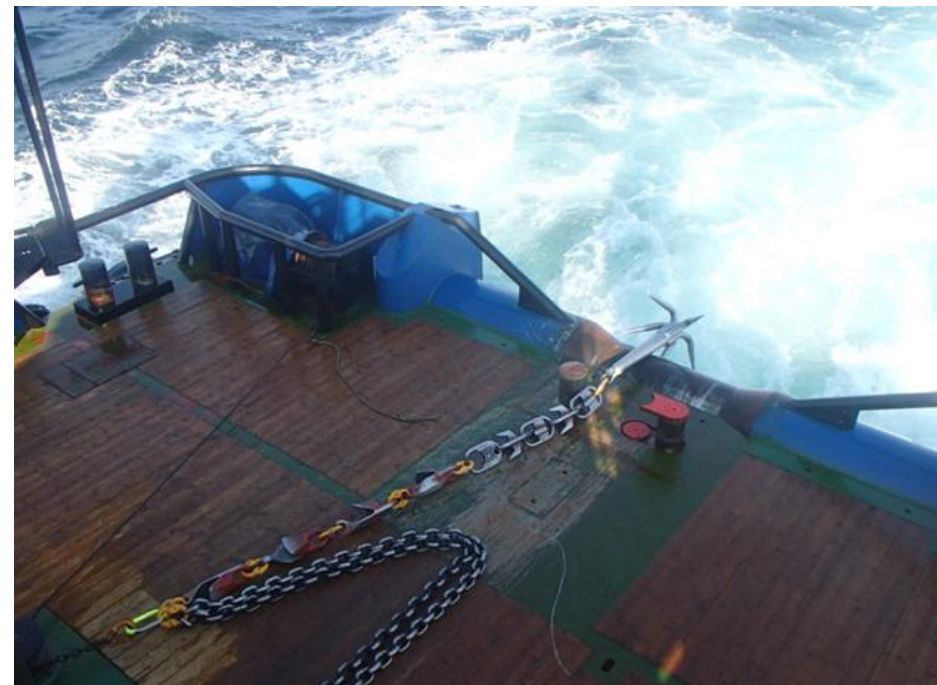
216 Ton (GWVH / DM632)



Pre-lay Grapnel Spread (PLGR)

For seabed clearance in offshore cable and pipeline operations. We follow ICPC recommendations

Complete Set



The PLGR equipment consists of several components, which are listed on the following page



Pre-lay Grapnel Spread (PLGR)

For seabed clearance in offshore cable and pipeline operations. We follow ICPC recommendations

Components



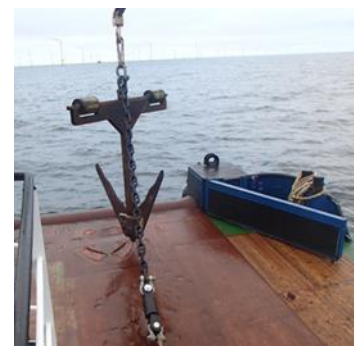
De-trenchers (3 tonnes)

Capable of achieving approximately 1.0m penetration depth



Swivel

55 Tonnes (GWVQ / DM634)



Shackles

55 Ton (GWVD / DM602, GWVE / DM601)

25 Ton (GWVC / DM600).



Anchor Chain

5-meter-long anchor chain used for securing equipment



miniROV | VideoRay Pro 4

Features advanced sensors, high-res cameras, and lighting for internal inspections up to 305 meters deep

VideoRay Pro 4



System information

Depth Rating: 305m (1,000 ft)
System Weight: 27,5 kg (60.5 lbs.)
Communication Protocol: RS-485

Control Panel

Power Requirements: 100-240 VAC
Dimensions: L=50.8 cm (20 in), W=37,3 cm, H=14,7 cm (5,8 in)
Weight: 8,4 kg (18.5 lbs.)
Computer: Dell with Intel i5 Quad Core, 8GB RAM, 256GB SSD
Software: Lite version of VideoRay Cockpit control software
Main display: 15.6" PC screen
Controller: Wired USB Logitech Hand Controller (Wireless Optional)
Recording: Integrated Recording (.WMV, AVI) One Button Hand-Controlled Video and Still-Image Recording
Overlay: Date, Time, Depth, Heading Video Output: Digital

Submersible

Dimensions: L=37,5 cm (14.75 in), W= 28.9 cm (11.4 in), H=22.3 cm (8.75 in)
Weight: 6.1 kg (13.5 lbs.) with Full Ballast Set
Propulsion Configuration: 3 thrusters (2 horizontal, 1 vertical)
Motor Type: Brushless
Thrust: 21 lbs.
Speed: 4.2 knots
Propeller: 100mm Propellers / 65mm Propeller)

Integrated Sensors

3D Accelerometer
 3D Tilt Compensated Compass
 Leak Indicator
 Internal Temperature
 Depth Sensor
 3D MEMS Gyro
 Water Temperature
 System Voltage

Lighting

Type: Optimized LED Arrays
Number of Sources: 2
Lumens: 3,600 lumens per light (7,200 total)
Camera Coverage: Forward-looking, Vertical Beam Spread covers the entire range of the main camera

Camera

Main Camera: High Resolution - NTSC Format (Color or Black & White switchable)
View Angle: 90° Horizontal, 140° Diagonal
Vertical Tilt: 180° Control
Sensitivity: Color Mode: 0.004 Lux, B&W
Mode: 0.0001 Lux (DSS)

Tether

Neutral Performance: Neutral buoyancy
Negative Extension: Negative buoyancy



Torque Equipment

For high-precision fastening, tensioning, and tightening of large bolts and nuts in industrial applications

D-Flex (ITH Torque Wrench System)



Description

Feature: Cassette-based hydraulic wrench system
Year of production: 2024

CX (ITH Torque Wrench System)



Description

Feature: Hydraulic wrench for bolt tightening and loosening
Types: CX 5, CX 8, CX 28
Serial number(s): (12.18148), (12.15128), (12.11629)

BTC (ITH Bolt Tensioning System)



Description

Feature: Hydraulic bolt tensioning system using high-pressure pumps
Year of production: 2020

ADS (ITH Nut Runner)



Description

Feature: Digital battery-powered electronic nut runner
Size (L): 266 mm (ADS-100)
Year of production: 2020



Torque Equipment

For high-precision fastening, tensioning, and tightening of large bolts and nuts in industrial applications

High-Pressure Hydraulic Pump (Hydro-Max)



Description

Operating pressure: 850 bar
Size (W,L,H): 31cm, 50cm, 30cm
Year of production: 2019
Quantity: 1
Serial number(s): 12.11629

High-Pressure Hydraulic Pump (HYDRO-MAX)



Description

Features: Multi-Functional Remote and Digital Remote Control
Size (W,L,H): 31cm, 50cm, 30cm
Year of production: 2021
Quantity: 1
Serial number(s): 10.200111

Adapters for sockets



Description

Torque Range: 3.360-18.000 Nm
Size: 1 x 60-2 1/2 x 100
Availability: Larger quantities available for sizes (1 1/2 x 80) and (1 1/2 x 60), while high-torque adapters (e.g., 12000 Nm and 18000 Nm) are in lower quantities

Dual-Hoseline



Description

Size: 14x2mm
Quantity: 2
Year of production: 2020, 2023
Serial number(s): (86335), (103409)



Torque Equipment

For high-precision fastening, tensioning, and tightening of large bolts and nuts in industrial applications

Hydraulic Nikkel



Description

Size: M27x3-6AZ
Quantity: 2
Serial number(s): (10.204366), (10.219416)

Hydraulic Bolt Tensioning Cylinder



Description

Feature: Multi-staged
Size: M36x4
Quantity: 2
Serial number(s): (10.204113), (10.125361)

Hydraulic Bolt Tensioning Cylinder



Description

Feature: Multi-Staged with eye bolts
Size: M36x4
Quantity: 2
Serial number(s): (10.124731), (10.219417)

Hydraulic Bolt Tensioning Cylinder



Description

Features: Multi-staged with eye bolts
Size: M42 x 4,5
Year of production: 2021
Quantity: 4
Serial number(s): (10.112816), (10.219419), (10.204369), (10.187742)





Reliability and Assistance

Our equipment is regularly maintained and upgraded to ensure reliability and performance.

We recognize the importance of minimizing downtime, which is why we offer flexible rental options and support from our experts to ensure projects are completed on time and within budget.

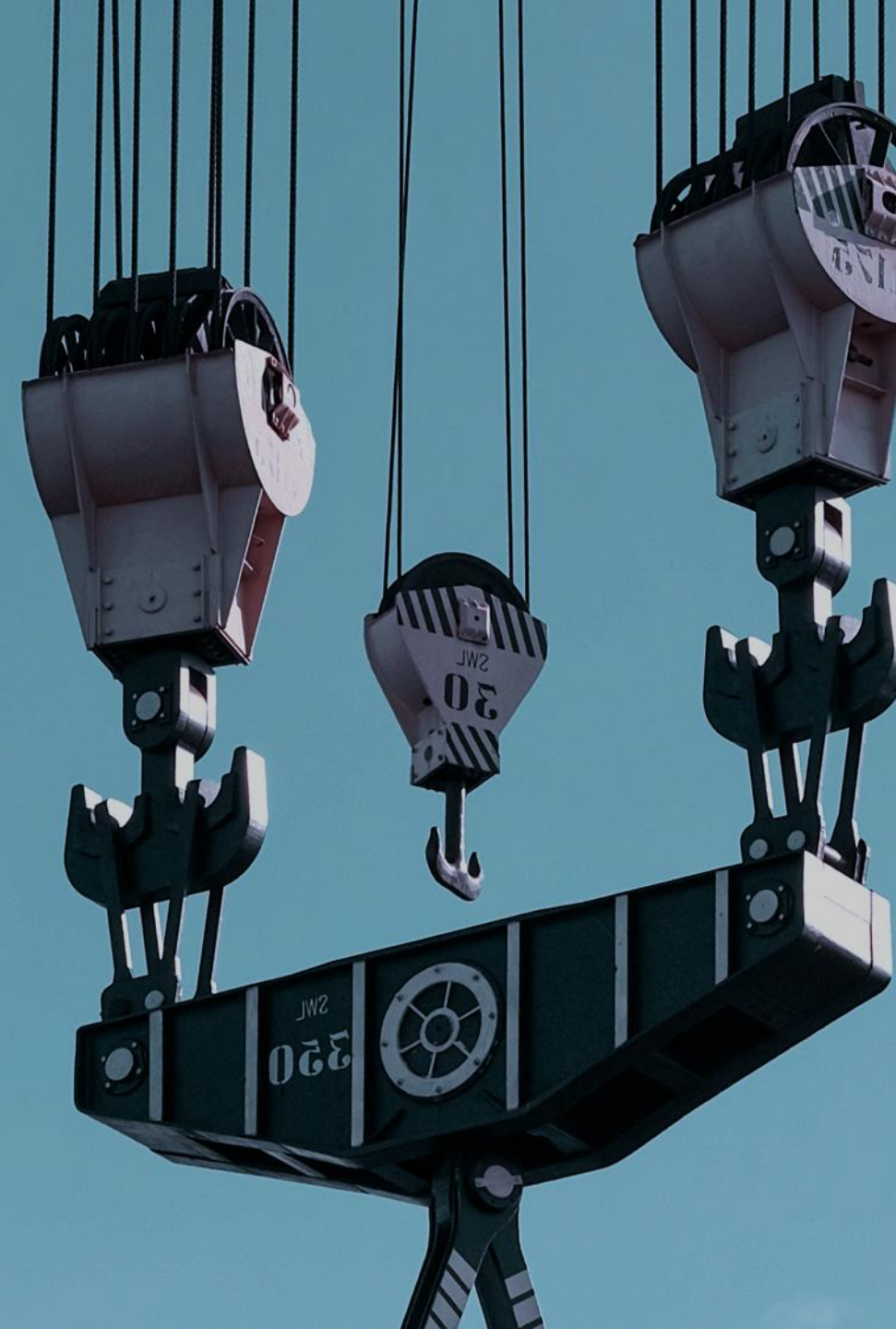
Contact us at contact@fonenergyservices.com for assistance in securing the equipment needed for your project's success.



contact@fonenergyservices.com

Rental Terms

- Minimum rental period is 3 days
- The rental period starts on the delivery date and ends on the return date
- Delivery terms are EXW from the point of origin
- Interim rentals are subject to availability
- The renter must insure the equipment against loss and/or damage
- Additional rental terms are available upon request
- For detailed terms and conditions, see document "FON-GUI-COM-1-NO"



Certifications and Accreditations



EN-ISO 9001:2015: Certified Quality Management System



NS-EN ISO 14001:2015: Certified Environmental Management System



NS-EN ISO 45001:2018: Certified HSE management system



NS-EN ISO 3834-2:2021: Welding Management System



Certified Competent Company



B1, Norwegian Maritime Authority: Authorized and certified personnel to perform certification after deck crane repairs



Achilles – Magnet JQS



DNV-CP-0484 & IACS UR Z17 Annex 1: Inspection, maintenance, testing, repair, and overhaul of lifeboats, rescue boats, launching appliances, and release gear



contact@fonenergyservices.com



FØN Energy Services